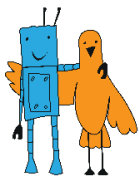


## «LINE FOLLOWER» CONTEST RULES «NARROW LINE FOLLOWER. PREMIER LEAGUE» CATEGORY

*Version 1.0 dated July 20, 2017*

### Contents

1. Specifications of the field and lines .....	2
2. Requirements for the Robot .....	2
3. Contest procedure.....	2
4. Scoring .....	2
5. Revision History .....	3



## 1. Specifications of the field and lines

General requirements for the field and lines are given in the general contest rules.

There are the following specifications of the "Narrow line follower. Premier League" category:

line width: 15mm

radius of curvature: not less than 75 mm

There are additional requirements for the "Narrow line follower. Premier League" category:

Follower line begins in the start area and ends at the finish area. Starting and ending point of the line should be clearly highlighted with transverse line.

The line should not cross itself at any point.

The minimum distance at which the line should approach the end of the competitive field must be at least 15 cm when measured from the center line;

There can be angles of not less than 90 degrees.

## 2. Requirements for the Robot

General requirements for the robot are given in the general contest rules.

There are the following specifications of the robot in the "Narrow line follower. Premier League" category:

length: not more than 30 cm;

width: not more than 30 cm;

weight: not more than 7.5 kg.

## 3. Contest procedure

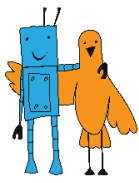
General contest procedure are given in the general contest rules.

In order to complete one attempt the robot is given the 30 seconds.

The robot that left the line when participating in these categories, should return to the line in the place where it left the line or at any earlier (already passed) point of the route.

## 4. Scoring

The scoring is given in the general contest rules.



## 5. Revision History

<b>№</b>	<b>Doc. No.</b>	<b>Date</b>	<b>Note</b>	<b>Previous version</b>	<b>Update version</b>
<b>1</b>	<b>2</b>	<b>3</b>	<b>4</b>	<b>5</b>	<b>6</b>
1.					
2.					
3.					
4.					
5.					
6.					
7.					
8.					
9.					
10.					
11.					
12.					
13.					
14.					
15.					