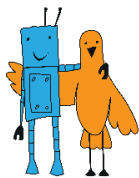


«SUMO» CONTEST RULES «Intellectual sumo 15x15. Educational kits» CATEGORY

Version 1.0 dated July 20, 2017.

Contents

1. Requirements for the robots	2
2. Requirements for the sumo ring	2
3. Order of the match.....	2
4. Match time.....	2
5. Awarding of points	2
6. Revision History	3



1. Requirements for the robots

General requirements for robots are given in the general contest rules. There are the following additional requirements in the “Intellectual sumo 15x15. Educational kits” class:

height - unlimited;

width- not exceed 15 cm;

length-not exceed 15 cm;

mass-not exceed 1000 g.

Construction of a robot taking a part in the “Intellectual sumo 15x15. Educational kits” class must not contain any kind of exposed metal elements (except of batteries or other kind of power sources). The metal element is considered to be exposed if it may possibly directly touch the rival robot or if this touching is possible through the layer of the flexible material of 2 mm thickness. The material is considered to be flexible if the sag of the material sample of length 5 cm is greater than 1 mm.

2. Requirements for the sumo ring

General requirements for the sumo ring are given in the general contest rules. There are the following additional requirements in the “Intellectual sumo 15x15. Educational kits” class:

height – 2,5 cm;

diameter - 77 cm;

width border - 2,5 cm;

minimum external space - 50 cm.

3. Order of the match

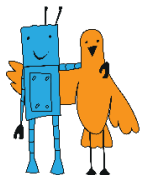
Order of the match is given in the general contest rules.

4. Match time

Match time is given in the general contest rules.

5. Awarding of points

Awarding of points is given in the general contest rules



6. Revision History

№	Doc. No.	Date	Note	Previous version	Update version
1	2	3	4	5	6
1.	3.0	Entire text cahnged		On the base of version 2.2	
2.					
3.					
4.					
5.					
6.					
7.					
8.					
9.					
10.					
11.					
12.					
13.					
14.					
15.					