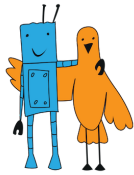


## «SUMO» CONTEST RULES «MINI-SUMO 10X10» CATEGORY

*Version 1.1 dated August 7, 2019*

General Provisions	2
2. Requirements for the Robot	2
3. Specifications of the Field	2
4. Contest Procedure	2
5. Violations	2
6. Scoring	2
7. Procedure for Determining the Winner	2



## 1. General Provisions

See the “Sumo” General Contest Rules.

## 2. Requirements for the Robot

For General Requirements for the Robot see the “Sumo” General Contest Rules.

Additional Requirements for the Robot:

- height - not limited;
- width - not more than 100 cm;
- length - not more than 100 mm;
- weight - not more than 500 g.

## 3. Specifications of the Field

For General Field Specifications see the “Sumo” General Contest Rules.

Additional Ring Specifications

- height – 25 mm;
- diameter – 770 mm;
- width of the ring boundary – 25 mm;
- minimum external space – 500 mm.

## 4. Contest Procedure

See the “Sumo” General Contest Rules.

## 5. Violations

See the “Sumo” General Contest Rules.

## 6. Scoring

See the “Sumo” General Contest Rules.

## 7. Procedure for Determining the Winner

See the “Sumo” General Contest Rules.